

## DATA COMMUNICATIONS

When building custom test & measurement equipment, assuring data flows correctly from device-A to device-B is vitally important, and typically involves the use of several standard communication interfaces (i.e., RS232, USB, GPIB and others).

The **DATA COMMUNICATIONS** collection from OI, offer test developers an impressive selection of practical solutions that are easy-to-use, offer huge flexibility and comes with a price tag that is just a fraction of the cost for comparable PC-based test instruments.

To learn more about how our unique communications products can benefit your next test development project, just go to the OI website and request a demo unit for a free 10-day trial period.

### SPECIAL BENEFITS

- *Great selection of standard data communications solutions*
- *Easy access to instrument resources*
- *Compact size, module just 2.50" x 2.75"*
- *Embedded or USB Interface*
- *Compatible with Lab-View, LabWindows, VB, HP-Vee, C/C++, Python & many others*
- *Low cost, OI modules can be as much as 60% less than traditional PC-based test instruments*
- *Use to build Smart Test Fixtures, create custom desktop test equipment or support larger ATE test systems*

### Timeless RS232

The COM-MATE module (shown below), supplies up to 4 standard RS232C serial communications ports. The unit is driven by a fast USB 2.0 bridge chip, which can support data rates up to 760bps. Use the COM-MATE module to communicate with multiple DUT's, control external test equipment or support other peripherals (i.e., Bar-Code Scanners and Printers).

### USB Central

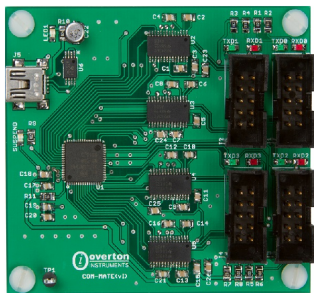
The HUB-MATE is a special 7-port USB 2.0 compliant hub module, that is designed to provide seamless connectivity. Simply install the HUB-MATE inside the base of a test fixture, and the external Host PC is instantly granted access to multiple OI instrument modules.

### Instrument Bus Interface

The GPIB-MATE module is a high-performance GPIB interface that is fully IEEE 488.1 compatible. The unit can perform as a basic IEEE 488 talker, listener and provide standard controller functions (which allow connection to up to 15 GPIB instruments).

### COM-MATE

USB to Quad Port RS232C COM Module



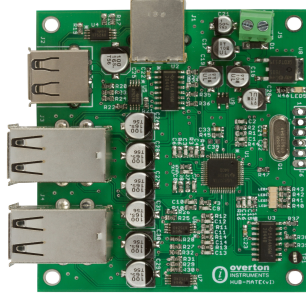
- *USB Port, 2.0 compatible*
- *Up to 4 RS232C Com Ports*
- *Up to 760K baud rate*
- *Programmable handshaking, protocols and interrupts, CTS & RTS controls*
- *LED's indicate Tx & Rx data activity for each port*

COM-MATE,  
Quad Port RS-232C Module  
**ETS-7010-00**

COM-MATE,  
Dual Port RS-232C Module  
**ETS-7020-00**

### HUB-MATE

7-Port USB Hub Module



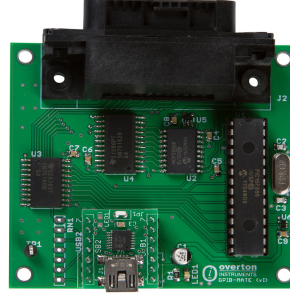
- *Up to 7 USB 2.0 Ports*
- *All ports support full & low speed operation*
- *Power switching and overcurrent protection*
- *Support suspend and resume operations*

HUB-MATE,  
7-Port USB Hub Module  
**ETS-7110-00**

HUB-MATE,  
4-Port USB Hub Module  
**ETS-7120-00**

### GPIB-MATE

GPIB Controller Module



- *Fully IEEE 488. 1 compatible*
- *Standard OI-BUS interface or optional USB 2.0 interface*
- *Bus powered*

GPIB-MATE,  
GPIB Controller Module  
**ETS-7210-00**

GPIB-MATE,  
with optional USB Interface  
**ETS-7211-00**

New Product,  
Under Development

### ORDER INFO